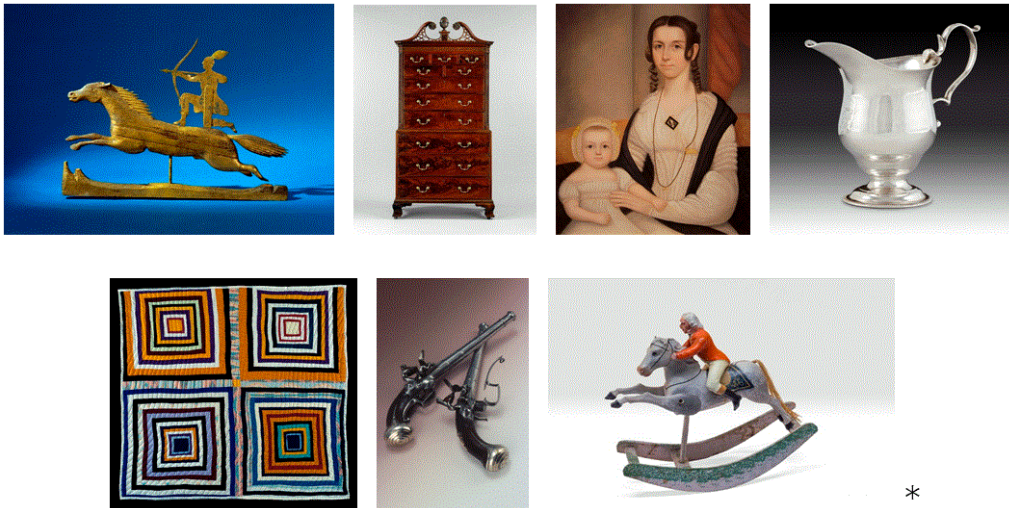


ART MUSEUMS *of Colonial Williamsburg*

FOR IMMEDIATE RELEASE

Media contacts: Robyn Liverant for the Art Museums of Colonial Williamsburg
212.472.6947 or robyn@robynliverant.com
Joe Straw for the Colonial Williamsburg Foundation
757.220.7287 or jstraw@cwf.org

THE ART MUSEUMS OF COLONIAL WILLIAMSBURG JOINS THE PRESTIGIOUS GLOBAL ROSTER OF MUSEUMS PARTICIPATING IN SOTHEBY'S MUSEUM NETWORK



Williamsburg, VA (January 11, 2017)—The Art Museums of Colonial Williamsburg is pleased to join the list of esteemed international museums that comprise Sotheby's Museum Network, a new online destination that makes videos from leading museums accessible to a vast global audience of art collectors and aficionados. Through its participation on the site, the Abby Aldrich Rockefeller Folk Art Museum, which will celebrate its 60th anniversary in 2017, and the DeWitt Wallace Decorative Art Museum will gain another vehicle for bringing material from their world-class collections to a broader audience. The Art Museums will be added to a select group of museums that presently includes The Metropolitan Museum of Art and Met Breuer in New York City, the Los Angeles County Museum of Art, Tate and the Victoria and Albert Museum in London, Grand Palais in Paris, Ullens Center for Contemporary Art in Beijing, Garage Museum of Contemporary Art in Moscow,

Museo Tamayo in Mexico City and The Peggy Guggenheim Collection in Venice among others. Launched in September 2016 with more than 150 videos from 18 museums, the network is expected to grow to include more than 100 of the world's leading cultural institutions.

“Sotheby’s Museum Network offers a wonderful opportunity for the Colonial Williamsburg Foundation to share its outstanding cultural collections with a worldwide audience,” said Ronald L. Hurst, the institution’s Carlisle H. Humelsine chief curator and vice president for collections, conservation, and museums. “We are honored to join this august assemblage.”

The Art Museums will initially share video content based on recent events and exhibitions on the Sotheby’s Museum Network that includes the 60th anniversary of the Abby Aldrich Rockefeller Folk Art Museum, *From Forge and Furnace*, *German Toys in America*, *Pieces of American History: The Restoration of Colonial Williamsburg's Historic Area*, *A Century of African-American Quilts*, *Silver from Mine to Masterpiece* and *Lock Stock and Barrel*. This content will continue to be updated as additional videos are produced.

“We are thrilled to welcome the Art Museums of Colonial Williamsburg to Sotheby’s Museum Network at such an exciting time for the renowned institution,” said Anthony Calnek, Sotheby’s senior vice-president, worldwide director of media services. “Their distinctive and historic collections will be showcased alongside those of many of the world’s leading art institutions on a platform that exposes a global audience to art and collecting.”

The Sotheby’s Museum Network content can be seen by millions of art lovers who visit Sotheby’s digital platforms, which currently include its website (museumnetwork.sothebys.com) and Sotheby’s AppleTV app. Amazon Fire will offer the content in the future.

*Images (left to right): From *Voices of the Past: Objects from the Colonial Williamsburg Art Museums*: Weathervane, Probably Wells, Maine, 1850-1880, iron, pine, paint, and gilt, gift of Abby Aldrich Rockefeller, 1933.700.1; Double Chest of Drawers, mahogany, bald cypress, and tulip poplar, Charleston, South Carolina, 1765-1780, Museum Purchase, 1974-166; *Portrait of Francina Elizabeth Cox Greer and her daughter Elizabeth Mentoria*, Georgia, 1838-1839, oil on canvas, Museum Purchase, in memory of Virginia R. Ericson, given by her daughter, Loretta J. Roman, 2013.100.1; from *Silver from Mine to Masterpiece*: Cream Pot, Thomas You, Charleston, South Carolina, ca. 1775, silver, Museum Purchase, The Friends of Colonial Williamsburg Collections Fund, 2015-145; from *A Century of African-American Quilts*: Housetop Quilt, Rita Mae Pettway, Gee’s Bend, Alabama, ca. 1990, cotton and polyester, Museum Purchase, Dr. and Mrs. T. Marshall Hahn, Jr. Fund, 2008.609.10; from *Lock, Stock, and Barrel*: Pair of Screw Barrel Pistols, London, England, ca. 1735, iron/steel, silver wire inlay, and walnut stock, Museum Purchase, 2000-77, 1&2; and from *German Toys in America*: Rocking Horse, Germany or America, 19th century, composition, wood, metal, and paint, Bequest of Mrs. Effie Thixton Arthur, 1979.1200.51.

About The Art Museums of Colonial Williamsburg

The [Art Museums of Colonial Williamsburg](#) include the Abby Aldrich Rockefeller Folk Art Museum and the DeWitt Wallace Decorative Arts Museum. The Abby Aldrich Rockefeller Folk Art Museum is home to the nation's premier collection of American folk art, with more than 7,000 folk art objects made during the 18th, 19th and 20th centuries. The DeWitt Wallace Decorative Arts Museum exhibits the best in British and American fine and decorative arts from 1670–1840. The Art Museums of Colonial Williamsburg are located at the intersection of Francis and South Henry Streets in Williamsburg, Va., and are entered through the [Public Hospital of 1773](#). Expansion of the museum complex is expected to break ground in 2017. Once completed, the museums' new entrance and will provide improved public access, increased exhibition space and guest services among other enhancements. Museum hours from March 18, 2016, to January 2, 2017: 10:00 a.m. to 7:00 p.m. daily. From January 2, 2017, through March 16, 2017: Sunday to Thursday, 10:00 a.m. to 5:00 p.m. and Friday to Saturday 10:00 a.m. to 7:00 p.m. After March 16, hours will be 10:00 a.m. to 7:00 p.m. daily.

- CWF -

If you no longer wish to receive news releases from the Colonial Williamsburg Foundation, please reply to this message with UNSUBSCRIBE in the subject line. Thank you.